

SALT HRS Workflow (v3.5 Mar 11, 2005)

ID	Task Name	Duration	Start	Finish	2004				2005				2006				2007				2008			
					Qtr 3	Qtr 4	Qtr 1	Qtr 2	Qtr 3	Qtr 4	Qtr 1	Qtr 2	Qtr 3	Qtr 4	Qtr 1	Qtr 2	Qtr 3	Qtr 4	Qtr 1	Qtr 2	Qtr 3	Qtr 4		
1	Provide SALT with High Resolution Spectrograph	1137 days	Mon 06/10/03	Tue 12/02/08																				
2	<u>KEY DATES ARE HIGHLIGHTED IN PURPLE & UNDERLINED</u>	0 days	Thu 01/07/04	Thu 01/07/04																				
3	Concept development Phase	109 days	Mon 06/10/03	Thu 04/03/04																				
12	Preliminary Design Phase	97 days	Fri 05/03/04	Mon 19/07/04																				
20	PDR	1 day	Thu 29/07/04	Thu 29/07/04																				
21	revise PDR documentation	20 days	Thu 09/09/04	Thu 07/10/04																				
25	SSWG and SALT Board Meeting	1 day	Thu 18/11/04	Thu 18/11/04																				
26	Critical Design Phase	111 days	Tue 16/11/04	Tue 19/04/05																				
37	CDR (spectragraph)	0 days	Tue 12/04/05	Tue 12/04/05																				
38	CDR (detectors)	0 days	Tue 12/04/05	Tue 12/04/05																				
39	SALT technical approval received (at May Board Meeting)	0 days	Wed 11/05/05	Wed 11/05/05																				
40	SALT - UC contract approved for signing (at May Board Meeting)	0 days	Wed 11/05/05	Wed 11/05/05																				
41	HRS Construction Begins	0 days	Tue 31/05/05	Tue 31/05/05																				
42	Design & Construction Phase	391 days	Tue 18/01/05	Tue 18/07/06																				
43	delay starting red path (retained for file structure reasons)	0 days	Tue 31/05/05	Tue 31/05/05																				
44	build mechanical housings and supports	346 days	Tue 18/01/05	Tue 16/05/06																				
45	create mechanical sub-system specification	45 days	Tue 18/01/05	Mon 21/03/05																				
46	build centre frame (UC)	206 days	Tue 22/03/05	Tue 03/01/06																				
47	finalise centre frame design	15 days	Tue 22/03/05	Mon 11/04/05																				
48	manufacture optical bench	90 days	Wed 01/06/05	Tue 04/10/05																				
49	order rectangular section steel	10 days	Wed 01/06/05	Tue 14/06/05																				
50	fabricate centre section & overhead frame	30 days	Wed 15/06/05	Tue 26/07/05																				
51	masking / sandblasting / painting	15 days	Wed 27/07/05	Tue 16/08/05																				
52	customise optical bench	25 days	Wed 05/10/05	Tue 08/11/05																				
53	assemble centre section (ready to accept other items)	30 days	Wed 23/11/05	Tue 03/01/06																				
54	build external tank (UC)	141 days	Tue 12/04/05	Tue 25/10/05																				
55	finalise external tank design	35 days	Tue 12/04/05	Mon 30/05/05																				
56	external tank fabrication	65 days	Wed 29/06/05	Tue 27/09/05																				
57	assist sub-contractor as needed	65 days	Wed 29/06/05	Tue 27/09/05																				
58	perform external tank acceptance tests	10 days	Wed 12/10/05	Tue 25/10/05																				
59	build light input housing (UC)	121 days	Tue 19/04/05	Tue 04/10/05																				
60	finalise light input housing design	20 days	Tue 19/04/05	Mon 16/05/05																				
61	order mechanical components for light input housing	20 days	Wed 27/07/05	Tue 23/08/05																				
62	build light input optics housing	30 days	Wed 24/08/05	Tue 04/10/05																				
63	construct light input sub-system (UC)	144.5 days	Thu 03/03/05	Wed 21/09/05																				
64	finalise light input subsystem specification	12.5 days	Thu 03/03/05	Mon 21/03/05																				
65	design light input mounting assembly	10 days	Tue 22/03/05	Mon 04/04/05																				
66	obtain fibre optic cable	45 days	Wed 01/06/05	Tue 02/08/05																				
67	build fibre injection test set	20 days	Wed 01/06/05	Tue 28/06/05																				
68	assemble and test light input sub-system (incl image slicers)	20 days	Wed 03/08/05	Tue 30/08/05																				
69	construct slit viewing optics	15 days	Wed 31/08/05	Tue 20/09/05																				
70	light input sub-system completed	1 day	Wed 21/09/05	Wed 21/09/05																				
71	build input fold mirror support (UC)	111 days	Tue 05/04/05	Tue 06/09/05																				
72	finalise input fold mirror support design	10 days	Tue 05/04/05	Mon 18/04/05																				
73	build fold mirror support assembly (in house)	20 days	Wed 10/08/05	Tue 06/09/05																				
74	build collimator mirror (M1) support assembly (UC)	136 days	Tue 05/04/05	Tue 11/10/05																				
75	finalise collimator mirror support design	20 days	Tue 05/04/05	Mon 02/05/05																				
76	order collimator mirror support materials	15 days	Wed 01/06/05	Tue 21/06/05																				
77	fabricate collimator mirror support (in-house)	25 days	Wed 22/06/05	Tue 26/07/05																				

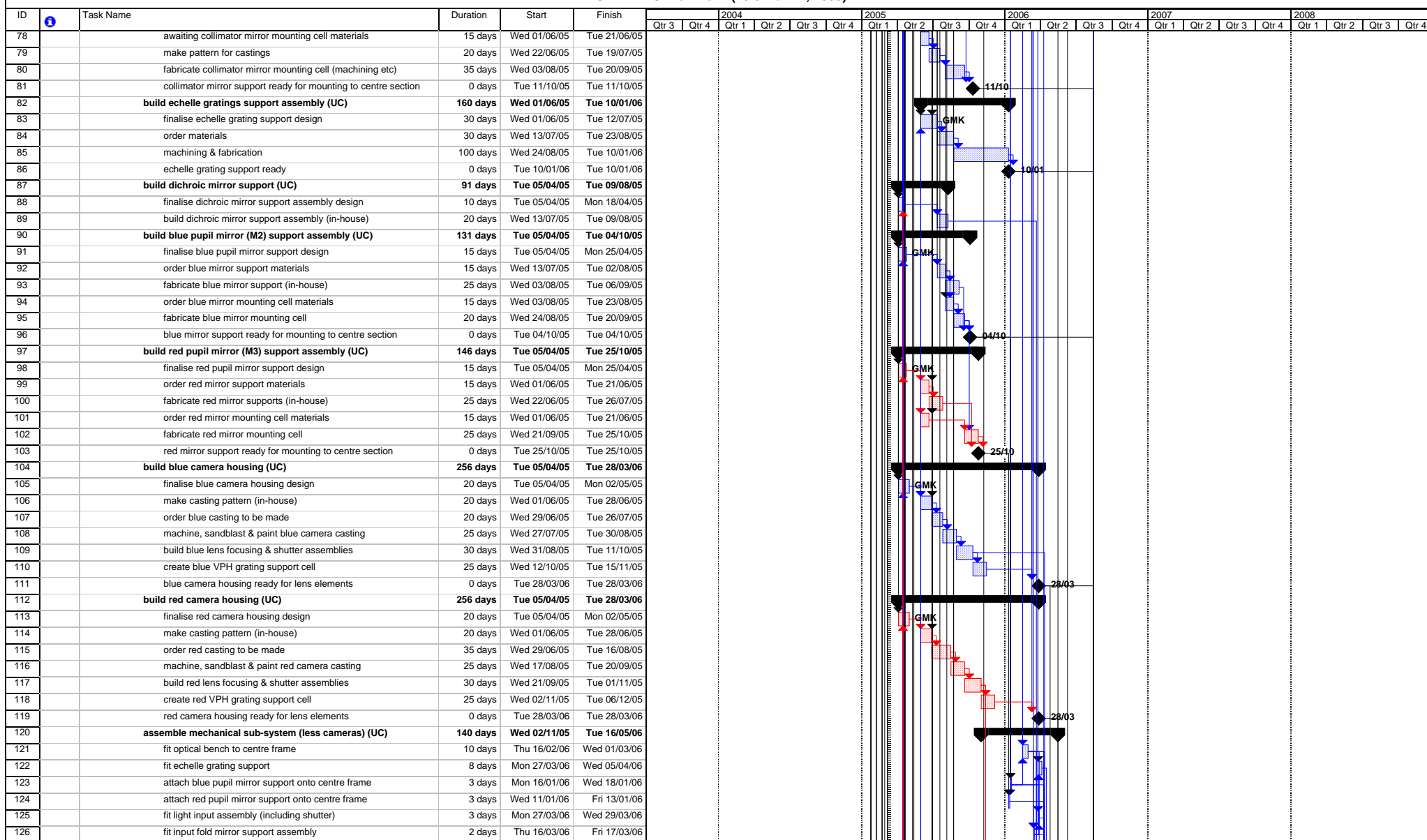
Project: SALT HRS v3.5
Date: Sat 12/03/05

Task Milestone Rolled Up Split External Tasks Deadline

Split Summary Rolled Up Milestone Project Summary

Progress Rolled Up Task Rolled Up Progress External Milestone

SALT HRS Workflow (v3.5 Mar 11, 2005)



Project: SALT HRS v3.5
Date: Sat 12/03/05




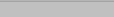









- Task Milestone
- Split Summary
- Progress Rolled Up Task
- Rolled Up Split
- Rolled Up Milestone
- Rolled Up Progress
- External Tasks
- Project Summary
- External Milestone
- Deadline

Peter Cottrell
University of Canterbury

SALT HRS Workflow (v3.5 Mar 11, 2005)

ID	Task Name	Duration	Start	Finish	2004				2005				2006				2007				2008				
					Qtr 3	Qtr 4	Qtr 1	Qtr 2	Qtr 3	Qtr 4	Qtr 1	Qtr 2	Qtr 3	Qtr 4	Qtr 1	Qtr 2	Qtr 3	Qtr 4	Qtr 1	Qtr 2	Qtr 3	Qtr 4	Qtr 1	Qtr 2	Qtr 3
127	fit dichroic support assembly	3 days	Thu 23/03/06	Mon 27/03/06																					
128	fit blue and red path VPH grating supports	6 days	Thu 30/03/06	Thu 06/04/06																					
129	fit blue camera shutter assembly	6 days	Thu 13/04/06	Thu 20/04/06																					
130	fit red camera shutter assembly	10 days	Wed 02/11/05	Tue 15/11/05																					
131	mechanical sub-system ready for (blue path) mirrors, camera & c	0 days	Thu 27/04/06	Thu 27/04/06																					
132	align and check mechanical subsystem	10 days	Wed 03/05/06	Tue 16/05/06																					
133	procure optical parts (UC)	386 days	Tue 25/01/05	Tue 18/07/06																					
134	make all light input optical parts	316 days	Tue 25/01/05	Tue 11/04/06																					
135	finalise light input section design & specification	40 days	Tue 25/01/05	Mon 21/03/05																					
136	obtain fore-optics (IRL)	191 days	Tue 22/03/05	Tue 13/12/05																					
146	obtain image slicer (IRL)	266 days	Tue 22/03/05	Tue 28/03/06																					
154	obtain tank input window optics (IRL)	121 days	Tue 22/03/05	Tue 06/09/05																					
162	perform light input module acceptance tests	10 days	Wed 29/03/06	Tue 11/04/06																					
163	make input fold mirror (IRL)	141 days	Tue 22/02/05	Tue 06/09/05																					
164	create input fold mirror specification	20 days	Tue 22/02/05	Mon 21/03/05																					
165	specify input fold mirror mounting arrangements	10 days	Tue 22/03/05	Mon 04/04/05																					
166	order input fold mirror glass	40 days	Wed 15/06/05	Tue 09/08/05																					
167	input fold mirror being manufactured	15 days	Wed 10/08/05	Tue 30/08/05																					
168	perform input fold mirror acceptance tests	5 days	Wed 31/08/05	Tue 06/09/05																					
169	make collimator mirror (M1) (IRL)	281 days	Tue 25/01/05	Tue 21/02/06																					
170	finalise collimator mirror specification	40 days	Tue 25/01/05	Mon 21/03/05																					
171	specify collimator mirror mounting arrangements	10 days	Tue 22/03/05	Mon 04/04/05																					
172	order collimator mirror glass	50 days	Wed 15/06/05	Tue 23/08/05																					
173	choose collimator mirror manufacturer	10 days	Wed 15/06/05	Tue 28/06/05																					
174	await collimator mirror manufacture (incl. coating)	115 days	Wed 24/08/05	Tue 31/01/06																					
175	assist subcontractor as needed	115 days	Wed 24/08/05	Tue 31/01/06																					
176	perform collimator mirror acceptance tests	15 days	Wed 01/02/06	Tue 18/07/06																					
177	obtain echelle gratings (Richardson)	356 days	Tue 08/03/05	Tue 18/07/06																					
178	create grating specification	10 days	Tue 08/03/05	Mon 21/03/05																					
179	specify grating mounting arrangement	3 days	Tue 22/03/05	Thu 24/03/05																					
180	choose grating supplier	15 days	Fri 25/03/05	Thu 14/04/05																					
181	order gratings to be manufactured (option 2)	0 days	Tue 31/05/05	Tue 31/05/05																					
182	gratings manufacture underway	280 days	Wed 01/06/05	Tue 27/06/06																					
183	assist sub-contractor as required	280 days	Wed 01/06/05	Tue 27/06/06																					
184	perform gratings acceptance tests	15 days	Wed 28/06/06	Tue 18/07/06																					
185	make blue pupil mirror (M2) (IRL)	281 days	Tue 25/01/05	Tue 21/02/06																					
186	finalise blue pupil mirror specification	40 days	Tue 25/01/05	Mon 21/03/05																					
187	specify blue pupil mirror mounting arrangements	10 days	Tue 22/03/05	Mon 04/04/05																					
188	order blue pupil mirror glass	50 days	Wed 01/06/05	Tue 09/08/05																					
189	choose blue pupil mirror manufacturer	10 days	Wed 10/08/05	Tue 23/08/05																					
190	order blue pupil mirror to be manufactured	115 days	Wed 24/08/05	Tue 31/01/06																					
191	assist subcontractor as needed	115 days	Wed 24/08/05	Tue 31/01/06																					
192	perform blue pupil mirror acceptance tests	15 days	Wed 01/02/06	Tue 18/07/06																					
193	make blue camera fold mirror (fixed)	141 days	Tue 22/02/05	Tue 06/09/05																					
194	finalise specification for blue camera fold mirror	20 days	Tue 22/02/05	Mon 21/03/05																					
195	blue camera fold mirror being manufactured	60 days	Wed 01/06/05	Tue 23/08/05																					
196	blue camera fold mirror acceptable tests	10 days	Wed 24/08/05	Tue 06/09/05																					
197	make blue VPH grating (Wasatch)	171 days	Tue 08/03/05	Tue 01/11/05																					
198	create blue VPH grating specification	10 days	Tue 08/03/05	Mon 21/03/05																					

Project: SALT HRS v3.5
Date: Sat 12/03/05

Task		Milestone		Rolled Up Split		External Tasks		Deadline	
Split		Summary		Rolled Up Milestone		Project Summary			
Progress		Rolled Up Task		Rolled Up Progress		External Milestone			

SALT HRS Workflow (v3.5 Mar 11, 2005)

ID	Task Name	Duration	Start	Finish	2004				2005				2006				2007				2008			
					Qtr 3	Qtr 4	Qtr 1	Qtr 2	Qtr 3	Qtr 4	Qtr 1	Qtr 2	Qtr 3	Qtr 4	Qtr 1	Qtr 2	Qtr 3	Qtr 4	Qtr 1	Qtr 2	Qtr 3	Qtr 4		
199	specify blue VPH grating mounting arrangement	5 days	Tue 22/03/05	Mon 28/03/05																				
200	choose blue VPH grating supplier	15 days	Tue 29/03/05	Mon 18/04/05																				
201	order blue VPH grating to be manufactured	0 days	Tue 14/06/05	Tue 14/06/05																				
202	blue VPH grating manufacture underway	60 days	Wed 15/06/05	Tue 06/09/05																				
203	assist blue VPH grating sub-contractor as required	60 days	Wed 15/06/05	Tue 06/09/05																				
204	perform blue VPH grating acceptance tests	10 days	Wed 07/09/05	Tue 20/09/05																				
205	attach blue VPH lenses to blue VPH grating	30 days	Wed 21/09/05	Tue 01/11/05																				
206	make blue camera lens elements (IRL)	331 days	Tue 08/02/05	Tue 16/05/06																				
207	finalise blue camera lens element specifications	30 days	Tue 08/02/05	Mon 21/03/05																				
208	specify mounting & fixing arrangements	10 days	Tue 22/03/05	Mon 04/04/05																				
209	choose blue camera lens elements supplier	15 days	Tue 05/04/05	Mon 25/04/05																				
210	order blue camera lens elements	0 days	Tue 31/05/05	Tue 31/05/05																				
211	making all blue path camera lens elements	170 days	Wed 01/06/05	Tue 24/01/06																				
212	ensure all elements within specifications	15 days	Wed 25/01/06	Tue 14/02/06																				
213	assemble lens elements into casting	20 days	Wed 29/03/06	Tue 25/04/06																				
214	align and check blue camera	10 days	Wed 26/04/06	Tue 09/05/06																				
215	perform acceptance tests	5 days	Wed 10/05/06	Tue 16/05/06																				
216	blue camera assembly ready	0 days	Tue 16/05/06	Tue 16/05/06																				
217	make blue path field flattener (CCD cryostat window) (IRL)	69 days	Wed 01/06/05	Mon 05/09/05																				
218	create blue field flattener specification	7 days	Wed 01/06/05	Thu 09/06/05																				
219	specify blue field flattener mounting arrangement	7 days	Fri 10/06/05	Mon 20/06/05																				
220	choose blue path field flattener manufacturer	15 days	Tue 21/06/05	Mon 11/07/05																				
221	order blue field flattener to be manufactured	0 days	Mon 11/07/05	Mon 11/07/05																				
222	assist sub-contractor as needed	10 days	Tue 12/07/05	Mon 25/07/05																				
223	perform blue field flattener acceptance tests	10 days	Tue 26/07/05	Mon 08/08/05																				
224	send to blue detector module manufacturer for mounting	20 days	Tue 09/08/05	Mon 05/09/05																				
225	obtain dichroic splitter (Barr Associates)	172 days	Tue 01/03/05	Wed 26/10/05																				
226	create dichroic specification	15 days	Tue 01/03/05	Mon 21/03/05																				
227	specify dichroic mounting arrangement	10 days	Tue 22/03/05	Mon 04/04/05																				
228	choose dichroic supplier	15 days	Wed 01/06/05	Tue 21/06/05																				
229	order dichroic to be manufactured (incl. coating)	1 day	Wed 22/06/05	Wed 22/06/05																				
230	dichroic being manufactured	60 days	Thu 23/06/05	Wed 14/09/05																				
231	assist sub-contractor as needed	60 days	Thu 23/06/05	Wed 14/09/05																				
232	test report	10 days	Thu 15/09/05	Wed 28/09/05																				
233	perform dichroic acceptance tests	20 days	Thu 29/09/05	Wed 26/10/05																				
234	make red pupil mirror (M3) (IRL)	331 days	Tue 25/01/05	Tue 02/05/06																				
235	finalise red pupil mirror specification	40 days	Tue 25/01/05	Mon 21/03/05																				
236	specify red pupil mirror mounting arrangements	10 days	Tue 22/03/05	Mon 04/04/05																				
237	choose red pupil mirror manufacturer	10 days	Wed 01/06/05	Tue 14/06/05																				
238	order red pupil mirror to be manufactured	0 days	Tue 14/06/05	Tue 14/06/05																				
239	red pupil mirror manufacture underway (incl. coating)	115 days	Wed 02/11/05	Tue 11/04/06																				
240	assist subcontractor as needed	115 days	Wed 02/11/05	Tue 11/04/06																				
241	perform red pupil mirror acceptance tests	15 days	Wed 12/04/06	Tue 02/05/06																				
242	make red camera fold mirror (fixed)	141 days	Tue 22/02/05	Tue 06/09/05																				
243	finalise specification for red camera fold mirror	20 days	Tue 22/02/05	Mon 21/03/05																				
244	red camera fold mirror being manufactured	60 days	Wed 01/06/05	Tue 23/08/05																				
245	red camera fold mirror acceptable tests	10 days	Wed 24/08/05	Tue 06/09/05																				
246	make red VPH grating (Wasatch)	177 days	Tue 08/03/05	Wed 09/11/05																				
247	create red VPH grating specification	10 days	Tue 08/03/05	Mon 21/03/05																				

Project: SALT HRS v3.5
Date: Sat 12/03/05

Task		Milestone		Rolled Up Split		External Tasks		Deadline	
Split		Summary		Rolled Up Milestone		Project Summary			
Progress		Rolled Up Task		Rolled Up Progress		External Milestone			

SALT HRS Workflow (v3.5 Mar 11, 2005)

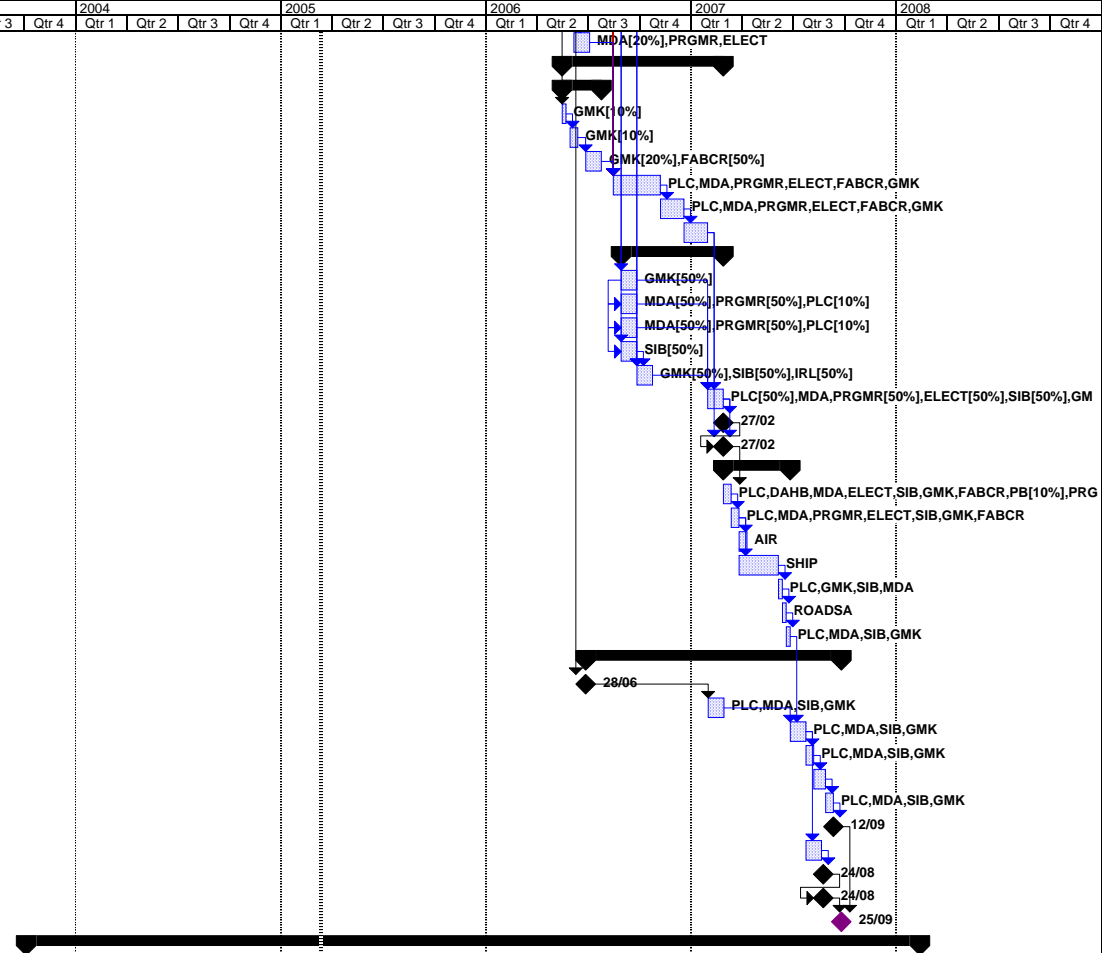
ID	Task Name	Duration	Start	Finish	2004				2005				2006				2007				2008					
					Qtr 3	Qtr 4	Qtr 1	Qtr 2	Qtr 3	Qtr 4	Qtr 1	Qtr 2	Qtr 3	Qtr 4	Qtr 1	Qtr 2	Qtr 3	Qtr 4	Qtr 1	Qtr 2	Qtr 3	Qtr 4	Qtr 1	Qtr 2	Qtr 3	Qtr 4
248	specify red VPH grating mounting arrangement	6 days	Tue 22/03/05	Tue 29/03/05																						
249	choose red VPH grating supplier	15 days	Wed 01/06/05	Tue 21/06/05																						
250	order red VPH grating to be manufactured	1 day	Wed 22/06/05	Wed 22/06/05																						
251	red VPH grating manufacture underway	60 days	Thu 23/06/05	Wed 14/09/05																						
252	assist red VPH grating sub-contractor as required	60 days	Thu 23/06/05	Wed 14/09/05																						
253	perform red VPH grating acceptance tests	10 days	Thu 15/09/05	Wed 28/09/05																						
254	attach red VPH lenses to red VPH grating	30 days	Thu 29/09/05	Wed 09/11/05																						
255	make red camera lens elements (IRL)	366 days	Tue 08/02/05	Tue 04/07/06																						
256	finalise red camera lens element specifications	30 days	Tue 08/02/05	Mon 21/03/05																						
257	specify mounting & fixing arrangements	10 days	Tue 22/03/05	Mon 04/04/05																						
258	choose red camera lens elements supplier	15 days	Tue 05/04/05	Mon 25/04/05																						
259	order red camera lens elements	0 days	Tue 31/05/05	Tue 31/05/05																						
260	making all red path camera lens elements	120 days	Wed 09/11/05	Tue 25/04/06																						
261	ensure all elements within specifications	15 days	Wed 26/04/06	Tue 16/05/06																						
262	assemble lens elements into casting	20 days	Wed 17/05/06	Tue 13/06/06																						
263	align and check red camera	10 days	Wed 14/06/06	Tue 27/06/06																						
264	perform acceptance tests	5 days	Wed 28/06/06	Tue 04/07/06																						
265	red camera assembly ready	0 days	Tue 04/07/06	Tue 04/07/06																						
266	make red path field flattener (CD cryostat window) (IRL)	113 days	Fri 11/03/05	Tue 16/08/05																						
267	create red field flattener specification	7 days	Fri 11/03/05	Mon 21/03/05																						
268	specify field flattener mounting arrangement	7 days	Tue 22/03/05	Wed 30/03/05																						
269	choose red field flattener manufacturer	15 days	Wed 01/06/05	Tue 21/06/05																						
270	order red field flattener to be manufactured	0 days	Tue 21/06/05	Tue 21/06/05																						
271	assist sub-contractor as needed	10 days	Wed 22/06/05	Tue 05/07/05																						
272	perform red field flattener acceptance tests	10 days	Wed 06/07/05	Tue 19/07/05																						
273	send to red detector module manufacturer for mounting	20 days	Wed 20/07/05	Tue 16/08/05																						
274	obtain blue detector module (Spectral Instruments)	261 days	Tue 25/01/05	Tue 24/01/06																						
275	create blue detector specification	40 days	Tue 25/01/05	Mon 21/03/05																						
276	specify & order testing CCD	90 days	Wed 01/06/05	Tue 04/10/05																						
277	test CCD received	0 days	Tue 04/10/05	Tue 04/10/05																						
278	choose blue detector manufacturer	15 days	Tue 12/04/05	Mon 02/05/05																						
279	order blue detector to be made	0 days	Tue 31/05/05	Tue 31/05/05																						
280	making blue detector	140 days	Wed 01/06/05	Tue 13/12/05																						
281	assist blue detector sub-contractor as needed	140 days	Wed 01/06/05	Tue 13/12/05																						
282	perform blue detector acceptance tests	30 days	Wed 14/12/05	Tue 24/01/06																						
283	obtain red detector module (Spectral Instruments)	230 days	Wed 01/06/05	Tue 18/04/06																						
284	create red detector specification	35 days	Wed 01/06/05	Tue 19/07/05																						
285	choose red detector manufacturer	15 days	Wed 20/07/05	Tue 09/08/05																						
286	order red detector to be made	0 days	Tue 23/08/05	Tue 23/08/05																						
287	making red detector	140 days	Wed 24/08/05	Tue 07/03/06																						
288	assist sub-contractor as needed	140 days	Wed 24/08/05	Tue 07/03/06																						
289	perform red detector acceptance tests	30 days	Wed 08/03/06	Tue 18/04/06																						
290	build control system (including detector) (UC)	355 days	Wed 23/02/05	Tue 04/07/06																						
291	finalise control system specification	20 days	Wed 23/02/05	Tue 22/03/05																						
292	build hardware components	120 days	Wed 01/06/05	Tue 15/11/05																						
293	write software for controlling blue detector	120 days	Wed 01/06/05	Tue 15/11/05																						
294	write software for controlling red detector	120 days	Wed 24/08/05	Tue 07/02/06																						
295	write software for controlling mechanical subsystems	120 days	Wed 26/10/05	Tue 11/04/06																						
296	integrate control system components	40 days	Wed 12/04/06	Tue 06/06/06																						

Project: SALT HRS v3.5
 Date: Sat 12/03/05

Task		Milestone		Rolled Up Split		External Tasks		Deadline	
Split		Summary		Rolled Up Milestone		Project Summary			
Progress		Rolled Up Task		Rolled Up Progress		External Milestone			

SALT HRS Workflow (v3.5 Mar 11, 2005)

ID	Task Name	Duration	Start	Finish	2004				2005				2006				2007				2008												
					Qtr 3	Qtr 4	Qtr 1	Qtr 2	Qtr 3	Qtr 4	Qtr 1	Qtr 2	Qtr 3	Qtr 4	Qtr 1	Qtr 2	Qtr 3	Qtr 4	Qtr 1	Qtr 2	Qtr 3	Qtr 4	Qtr 1	Qtr 2	Qtr 3	Qtr 4							
297	test control system	20 days	Wed 07/06/06	Tue 04/07/06																													
298	Integration Phase (in Christchurch) (UC)	205 days	Wed 17/05/06	Tue 27/02/07																													
299	set up test laboratory	50 days	Wed 17/05/06	Tue 25/07/06																													
300	identify suitable location	5 days	Wed 17/05/06	Tue 23/05/06																													
301	establish "clean room" processes	10 days	Wed 31/05/06	Tue 13/06/06																													
302	create suitable clean environment	20 days	Wed 28/06/06	Tue 25/07/06																													
303	final assembly	60 days	Wed 16/08/06	Tue 07/11/06																													
304	integration testing	30 days	Wed 08/11/06	Tue 19/12/06																													
305	perform full functional test	30 days	Wed 20/12/06	Tue 30/01/07																													
306	finalise documentation	130 days	Wed 30/08/06	Tue 27/02/07																													
307	draft service and maintenance manual	20 days	Wed 30/08/06	Tue 26/09/06																													
308	draft software maintenance manual	20 days	Wed 30/08/06	Tue 26/09/06																													
309	draft users manual	20 days	Wed 30/08/06	Tue 26/09/06																													
310	draft calibration manual	20 days	Wed 30/08/06	Tue 26/09/06																													
311	as-built fabrication drawings	20 days	Wed 27/09/06	Tue 24/10/06																													
312	final versions of all manuals	20 days	Wed 31/01/07	Tue 27/02/07																													
313	all documentation completed (less commissioning)	0 days	Tue 27/02/07	Tue 27/02/07																													
314	Pre-ship acceptance tests (in Christchurch)	0 days	Tue 27/02/07	Tue 27/02/07																													
315	Shipping Phase	85 days	Wed 28/02/07	Tue 26/06/07																													
316	perform pre-ship acceptance testing (Project Scientist in NZ)	10 days	Wed 28/02/07	Tue 13/03/07																													
317	disassemble & install into shipping crates	10 days	Wed 14/03/07	Tue 27/03/07																													
318	ship optics to Capetown (risk spreading)	10 days	Wed 28/03/07	Tue 10/04/07																													
319	ship structure to Capetown (risk spreading)	50 days	Wed 28/03/07	Tue 05/06/07																													
320	inspect on arrival into Capetown	5 days	Wed 06/06/07	Tue 12/06/07																													
321	transport to Sutherland	5 days	Wed 13/06/07	Tue 19/06/07																													
322	unpack and inspect	5 days	Wed 20/06/07	Tue 26/06/07																													
323	Commissioning Phase (at Sutherland)	325 days	Wed 28/06/06	Tue 25/09/07																													
324	appoint commissioning team	2 days	Wed 28/06/06	Thu 29/06/06																													
325	prepare environment for assembly operation	20 days	Thu 01/02/07	Wed 28/02/07																													
326	assemble HRS in spectrograph room	20 days	Wed 27/06/07	Tue 24/07/07																													
327	connect and commission all interfaces	10 days	Wed 25/07/07	Tue 07/08/07																													
328	test & prove completed instrument	15 days	Wed 08/08/07	Tue 28/08/07																													
329	perform SITE calibration	10 days	Wed 29/08/07	Tue 11/09/07																													
330	final test of all functions (Acceptance Tests)	10 days	Wed 12/09/07	Tue 25/09/07																													
331	train permanent SALT HRS Operators & Astronomers	20 days	Wed 25/07/07	Tue 21/08/07																													
332	hand over all documentation	0 days	Fri 24/08/07	Fri 24/08/07																													
333	HRS completed & commissioned (project finished)	0 days	Fri 24/08/07	Fri 24/08/07																													
334	Project Complete	0 days	Tue 25/09/07	Tue 25/09/07																													
335	Administer Project	1137 days	Mon 06/10/03	Tue 12/02/08																													



Project: SALT HRS v3.5
Date: Sat 12/03/05

